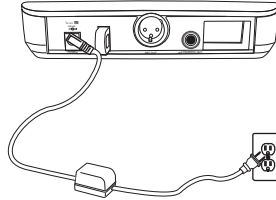
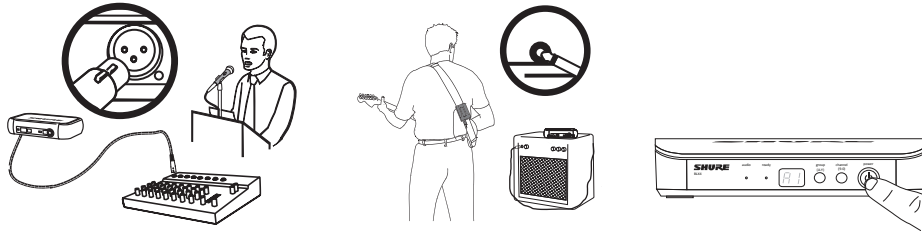


Quick Start Guide

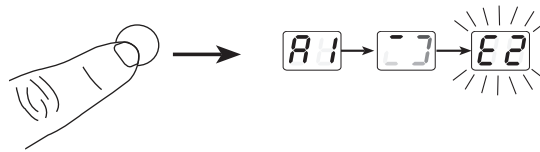
1. a. Connect receiver to power source.



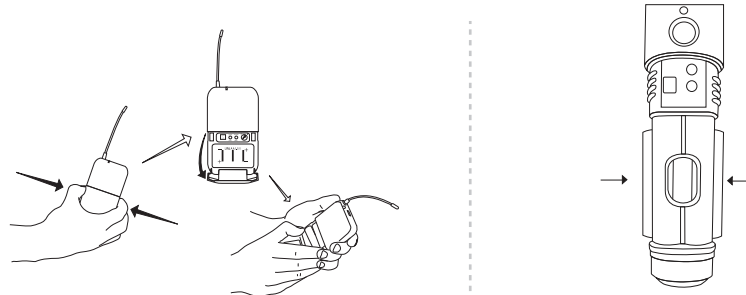
- b. Connect receiver to mixer or amplifier. Hold power button to turn on.



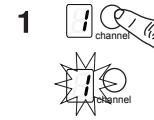
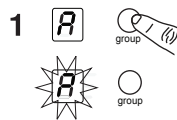
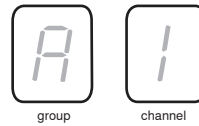
2. Press group button on receiver to perform a group scan.



3. a. Install batteries and turn on transmitter.



- b. On the transmitter, set the group and channel to match the receiver. The audio LED on the receiver should illuminate.



If setting up additional systems, leave the first transmitter and receiver on. For each additional receiver, manually set the group to match the first receiver.
Note: The receiver will automatically perform a channel scan to find an available frequency after the group has been selected. Set the transmitter frequency to match the receiver.

4. If sound is too faint or distorted, adjust the gain accordingly.

